

## DSP5011-N 6W 6.5" Frameless Ceiling Speaker



### *Features*

- 6.5 inch Frameless
- Aluminum Grille
- 70/100V., Rated Power:6W power option 6W-3W-1.5W-0.75W
- Max. SPL:98±2dB
- Freq. Resp.:140Hz - 18kHz
- Sensitivity 93±2dB
- Cutout size:Ø165-170mm
- In-ceiling quick installation by spring clip

### *Description*

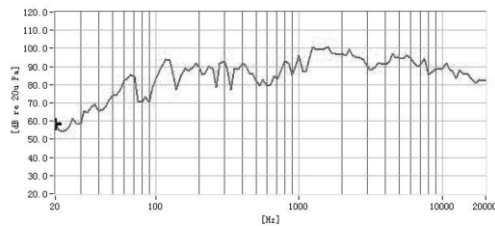
DSP5011-N Frameless Ceiling Speaker adopts the fashionable thin-edge plane big cylinder and the carbon alloy aluminum mesh design with the RAL white coating so as to integrate with any indoor place perfectly. Equipped with a 6.5" full-range designed loudspeaker with magnetic circuit encapsulated with special engineering plastic process, and the drum paper formed with tripping and hot pressing of algae salved organisms, for the purpose of super-strong reproduction of voice and music. It is able to bear the double rated powers within a short period, so as to ensure the high reliability of the loudspeaker under extreme conditions, prolong the service life, and reduce the possibility of occurrence of fault or degradation of performance to a great extent.

## Specification

Unit Driver	6.5"×1
RMS	6W
Rated Input	70/100V
Sensitivity (1m, 1W)	90dB±2dB
MAX. SPL. (1m)	92dB±2dB
Freq. Resp.	90-20kHz
Cutout size	ø165-ø170mm
Dimension	70mm×186mm
Weight	0.66kg

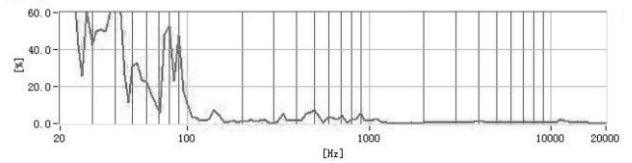
### FREQ. RESPONSE

(dB SPL, 1W, 1m)

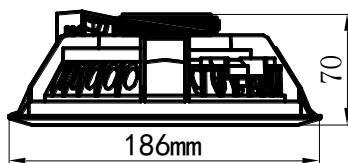


### DISTORTION

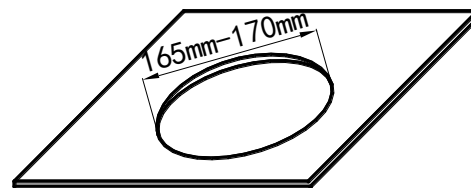
(THD < 1.5% 1W, 1m, 100Hz-10kHz)



### DIMENSIONS



### MOUNTING HOLE



## *Installation*

1. Cut a mounting hole on the ceiling with a diameter of 165-170mm (as shown above)
2. Adjust the clamps of the speaker based on different ply of ceiling.
3. Connect audio broadcasting wire to the terminals according to the table below.

Power terminals	Line Voltage	70V	100V
Red--- White		0.75W	1.5 W
Red--- Blue		1.5W	3W
Red---Black		3W	6W

4. Turn up the clamps of the speaker and insert them into the mounting hole on ceiling and then release them as shown below. (It is recommended to wear your working gloves for safety.)



5. Finally, check that it is secure and steady.